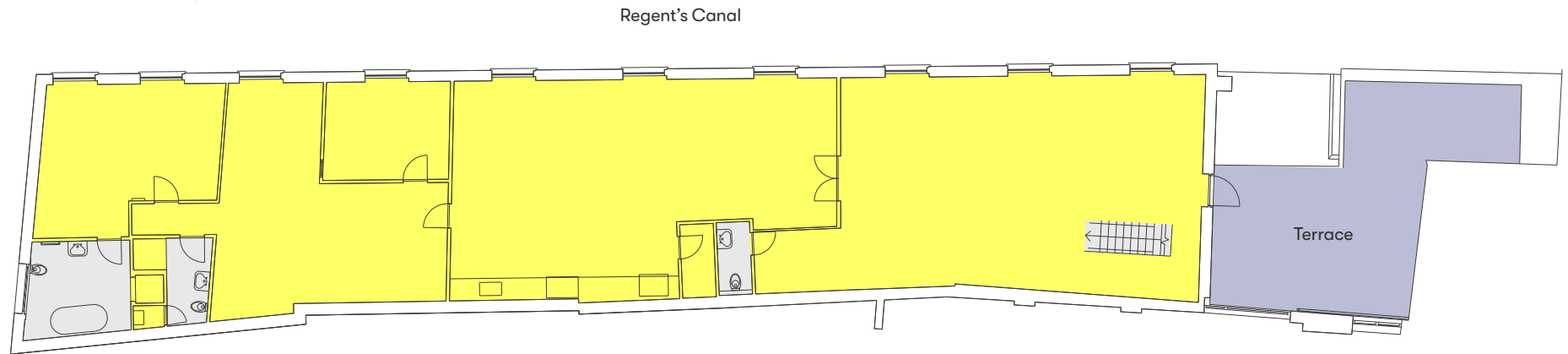


1 Lime Wharf



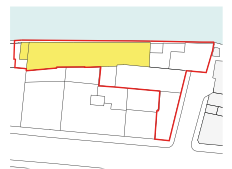
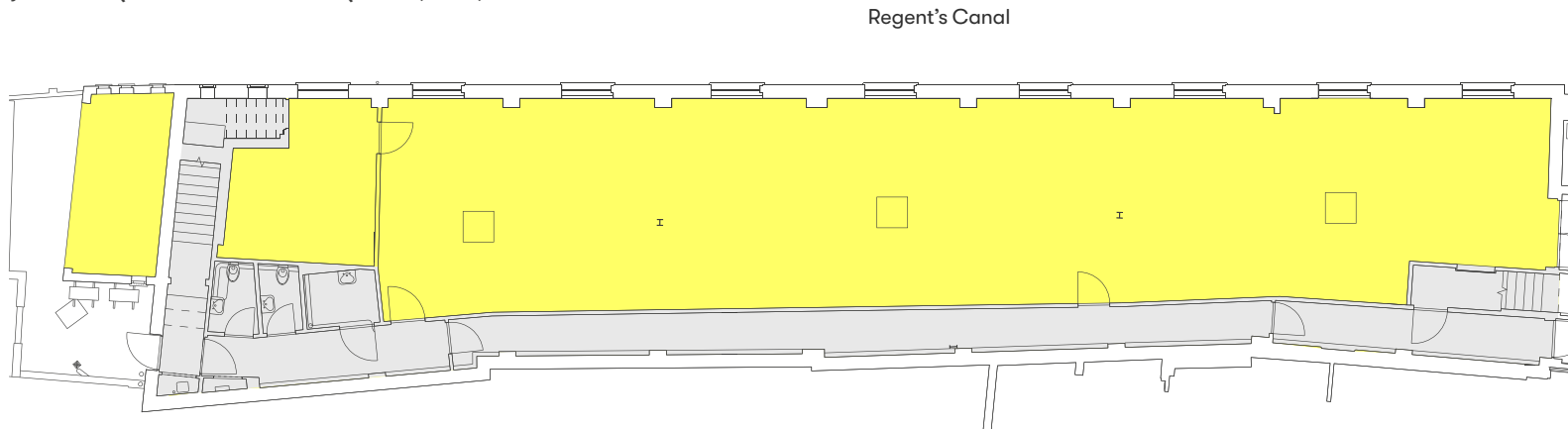
First floor (residential)

2,504 SQ FT / 232.6 SQ M (NIA)



Ground floor (office)

2,351 SQ FT / 218.4 SQ M (NIA)



- Space
- Terrace
- Core



Floor plans not to scale.
For indicative purposes only.

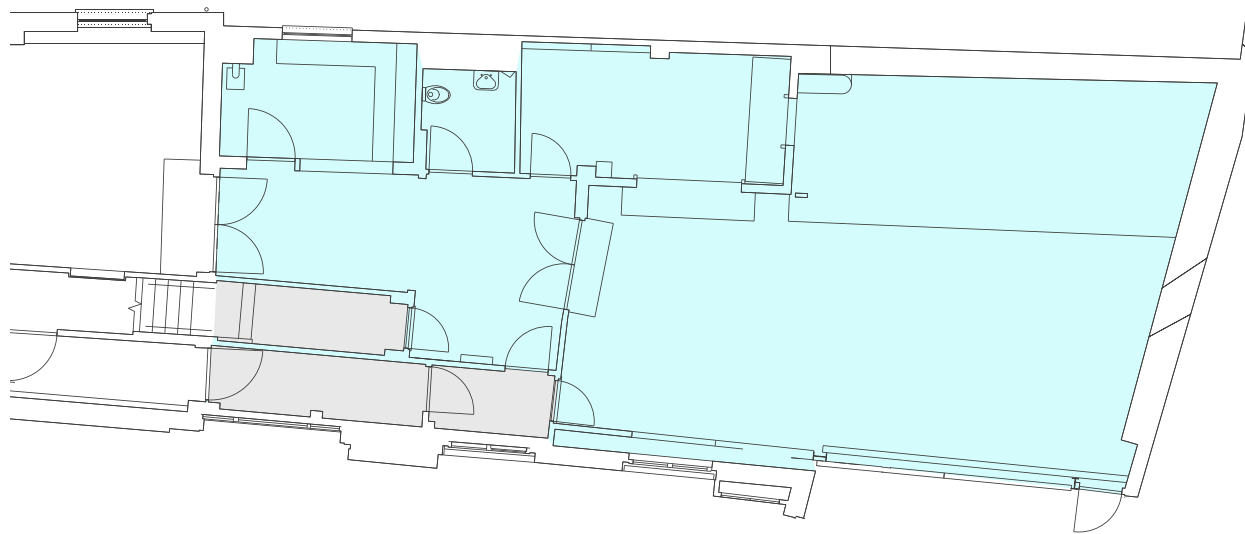
Yard



Yard/café

1,213 SQ FT / 112.7 SQ M (NIA)

Regent's Canal



Space
Core



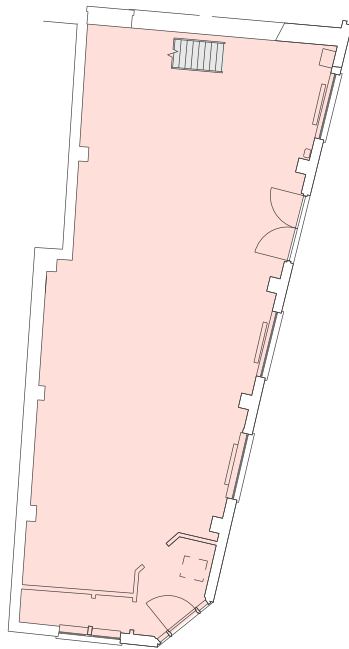
Floor plans not to scale.
For indicative purposes only.

25 Vyner Street



Ground floor (storage)

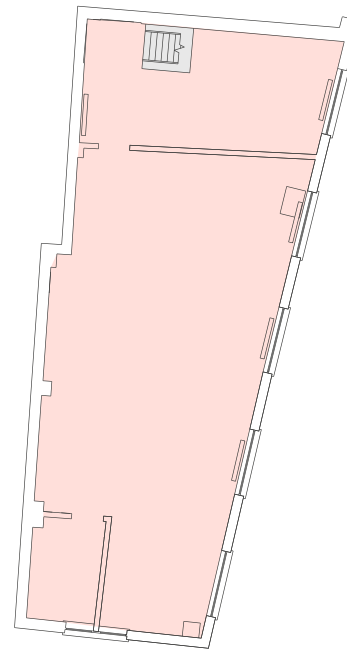
800 SQ FT / 74.3 SQ M (NIA)



Vyner Street

First floor (residential)

828 SQ FT / 76.9 SQ M



Vyner Street



- Space
- Core

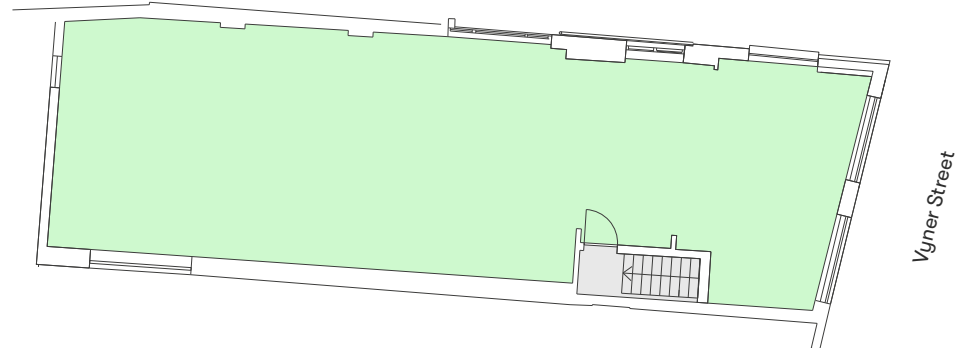
Floor plans not to scale.
For indicative purposes only.

25a Vyner Street



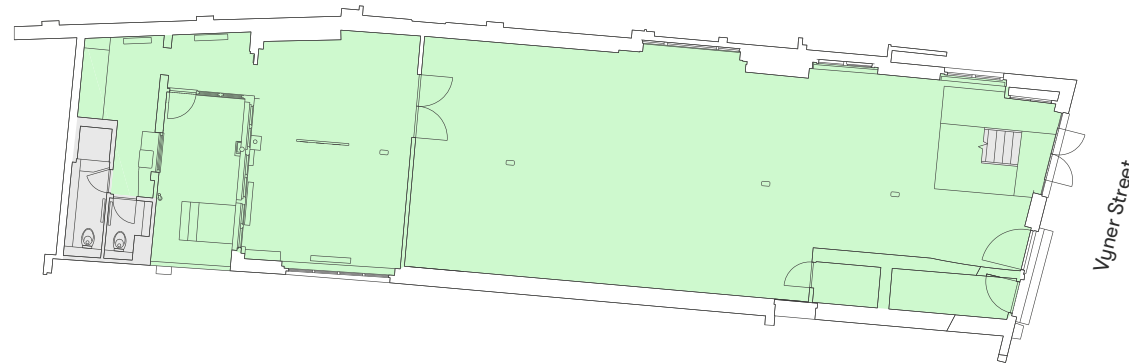
First floor (residential)

1,326 SQ FT / 123.2 SQ M (NIA)



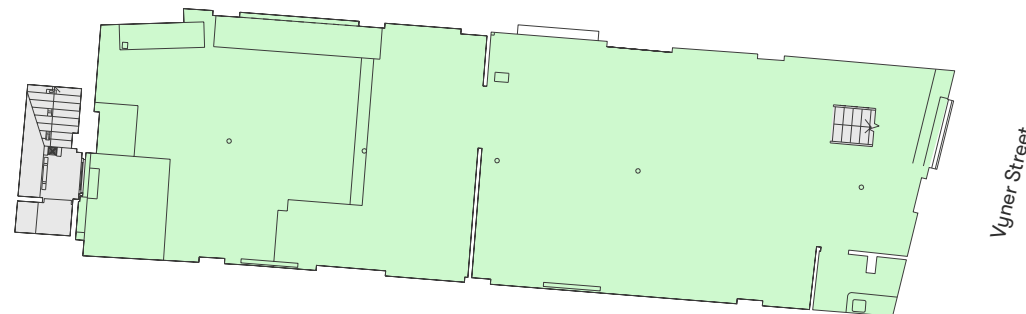
Ground floor (gallery)

1,373 SQ FT / 127.6 SQ M (NIA)



Basement floor (storage)

1,274 SQ FT / 118.4 SQ M (NIA)



Space
Core



Floor plans not to scale.
For indicative purposes only.